

Multiresolution Gray Scale and Rotation Invariant Texture Classification with Local Binary Patterns

Timo Ojala, Matti Pietikäinen and Topi Mäenpää
Machine Vision and Media Processing Unit
Infotech Oulu, University of Oulu
P.O.Box 4500, FIN - 90014 University of Oulu, Finland
{skidi, mkp, topioli}@ee.oulu.fi
<http://www.ee.oulu.fi/research/imag/texture>

Abstract. This paper presents a theoretically very simple yet efficient multiresolution approach to gray scale and rotation invariant texture classification based on local binary patterns and nonparametric discrimination of sample and prototype distributions. The method is based on recognizing that certain local binary patterns termed ‘uniform’ are fundamental properties of local image texture, and their occurrence histogram proves to be a very powerful texture feature. We derive a generalized gray scale and rotation invariant operator presentation that allows for detecting the ‘uniform’ patterns for any quantization of the angular space and for any spatial resolution, and present a method for combining multiple operators for multiresolution analysis. The proposed approach is very robust in terms of gray scale variations, since the operator is by definition invariant against any monotonic transformation of the gray scale. Another advantage is computational simplicity, as the operator can be realized with a few operations in a small neighborhood and a lookup table. Excellent experimental results obtained in true problems of rotation invariance, where the classifier is trained at one particular rotation angle and tested with samples from other rotation angles, demonstrate that good discrimination can be achieved with the occurrence statistics of simple rotation invariant local binary patterns. These operators characterize the spatial configuration of local image texture and the performance can be further improved by combining them with rotation invariant variance measures that characterize the contrast of local image texture. The joint distributions of these orthogonal measures are shown to be very powerful tools for rotation invariant texture analysis.

Keywords: nonparametric texture analysis Brodatz distribution histogram contrast

1 Introduction

Analysis of two-dimensional textures has many potential applications, for example in industrial surface inspection, remote sensing and biomedical image analysis, but only a limited number of examples of successful exploitation of texture exist. A major problem is that textures in the real world are often not uniform, due to variations in orientation, scale, or other visual appearance. The gray scale invariance is often important due to uneven illumination or great within-class variability. In addition, the degree of computational complexity of most proposed texture measures is too high, as Randen and Husoy [33] concluded in their recent extensive comparative study involving dozens of different spatial filtering methods: “A very useful direction for future research is therefore the development of powerful texture measures that can be extracted and classified with a low computational complexity”.

Most approaches to texture classification assume, either explicitly or implicitly, that the unknown samples to be classified are identical to the training samples with respect to spatial scale, orientation and gray scale properties. However, real world textures can occur at arbitrary spatial resolutions and rotations and they may be subjected to varying illumination conditions. This has inspired a collection of studies, which generally incorporate invariance with respect to one or at most two of the properties spatial scale, orientation and gray scale.

The first few approaches on rotation invariant texture description include generalized cooccurrence matrices [12], polarograms [11] and texture anisotropy [7]. Quite often an invariant approach has been developed by modifying a successful noninvariant approach such as MRF (Markov Random Field) model or Gabor filtering. Examples of MRF based rotation invariant techniques include the CSAR (circular simultaneous autoregressive) model by Kashyap and Khotanzad [17], the MRSAR (multiresolution simultaneous autoregressive) model by Mao and Jain [24], and the works of Chen and Kundu [6], Cohen *et al.* [9], and Wu and Wei [38]. In the case of feature based approaches such as filtering with Gabor wavelets or other basis functions, rotation invariance is realized by computing rotation invariant features from the filtered images or by converting rotation variant features to rotation invariant features [14][15][16][20][21][22][23][31][40]. Using a circular neighbor set, Porter and Canagarajah [32] presented rotation invariant generalizations for all three mainstream paradigms: wavelets,

GMRF and Gabor filtering. Utilizing similar circular neighborhoods Arof and Deravi obtained rotation invariant features with 1-D DFT transformation [2].

A number of techniques incorporating invariance with respect to both spatial scale and rotation have been presented [1][9][21][23][39][40]. The approach based on Zernike moments by Wang and Healey [37] is one of the first studies to include invariance with respect to all three properties, spatial scale, rotation, and gray scale. In his mid 90's survey on scale and rotation invariant texture classification Tan [36] called for more work on perspective projection invariant texture classification, which has received a rather limited amount of attention [5][8][18].

This work focuses on gray scale and rotation invariant texture classification, which has been addressed by Chen and Kundu [6] and Wu and Wei [38]. Both studies approached gray scale invariance by assuming that the gray scale transformation is a linear function. This is a somewhat strong simplification, which may limit the usefulness of the proposed methods. Chen and Kundu realized gray scale invariance by global normalization of the input image using histogram equalization. This is not a general solution, however, as global histogram equalization can not correct intrainage (local) gray scale variations.

In this paper, we propose a theoretically and computationally simple approach which is robust in terms of gray scale variations and which is shown to discriminate a large range of rotated textures efficiently. Extending our earlier work [28][29][30], we present a gray scale and rotation invariant texture operator based on local binary patterns. Starting from the joint distribution of gray values of a circularly symmetric neighbor set of pixels in a local neighborhood, we derive an operator that is by definition invariant against any monotonic transformation of the gray scale. Rotation invariance is achieved by recognizing that this gray scale invariant operator incorporates a fixed set of rotation invariant patterns.

The main contribution of this work lies in recognizing that certain local binary texture patterns termed 'uniform' are fundamental properties of local image texture, and in developing a generalized gray scale and rotation invariant operator for detecting these 'uniform' patterns. The term 'uniform' refers to the uniform appearance of the local binary pattern, i.e. there is a limited number of transitions or discontinuities in the circular presentation of the pattern.

These ‘uniform’ patterns provide a vast majority, sometimes over 90%, of the 3x3 texture patterns in examined surface textures. The most frequent ‘uniform’ binary patterns correspond to primitive microfeatures such as edges, corners and spots, hence they can be regarded as feature detectors that trigger for the best matching pattern.

The proposed texture operator allows for detecting ‘uniform’ local binary patterns at circular neighborhoods of any quantization of the angular space and at any spatial resolution. We derive the operator for a general case based on a circularly symmetric neighbor set of P members on a circle of radius R , denoting the operator as $LBP_{P,R}^{riu2}$. Parameter P controls the quantization of the angular space, whereas R determines the spatial resolution of the operator. In addition to evaluating the performance of individual operators of a particular (P,R) , we also propose a straightforward approach for multiresolution analysis, which combines the responses of multiple operators realized with different (P,R) .

The discrete occurrence histogram of the ‘uniform’ patterns (i.e. the responses of the $LBP_{P,R}^{riu2}$ operator) computed over an image or a region of image is shown to be a very powerful texture feature. By computing the occurrence histogram we effectively combine structural and statistical approaches: the local binary pattern detects microstructures (e.g. edges, lines, spots, flat areas), whose underlying distribution is estimated by the histogram.

We regard image texture as a two-dimensional phenomenon characterized by two orthogonal properties, spatial structure (pattern) and contrast (the ‘amount’ of local image texture). In terms of gray scale and rotation invariant texture description, these two are an interesting pair: where spatial pattern is affected by rotation, contrast is not, and *vice versa*, where contrast is affected by the gray scale, spatial pattern is not. Consequently, as long as we want to restrict ourselves to pure gray scale invariant texture analysis, contrast is of no interest, as it depends on the gray scale.

The $LBP_{P,R}^{riu2}$ operator is an excellent measure of the spatial structure of local image texture, but it by definition discards the other important property of local image texture, i.e. contrast, since it depends on the gray scale. If only rotation invariant texture analysis is desired, i.e. gray scale invariance is not required, the performance of $LBP_{P,R}^{riu2}$ can be further

enhanced by combining it with a rotation invariant variance measure $VAR_{P,R}$ that characterizes the contrast of local image texture. We present the joint distribution of these two complementary operators, $LBP_{P,R}^{riu2}/VAR_{P,R}$, as a powerful tool for rotation invariant texture classification.

As the classification rule, we employ nonparametric discrimination of sample and prototype distributions based on a log-likelihood measure of the (dis)similarity of histograms, which frees us from making any, possibly erroneous, assumptions about the feature distributions.

The performance of the proposed approach is demonstrated with two experiments. Excellent results in both experiments demonstrate that the proposed texture operator is able to produce from just one reference rotation angle a representation that allows for discriminating a large number of textures at other rotation angles. The operators are also computationally attractive, as they can be realized with a few operations in a small neighborhood and a lookup table.

The paper is organized as follows. The derivation of the operators and the classification principle are described in Section 2. Experimental results are presented in Section 3 and Section 4 concludes the paper.

2 Gray Scale and Rotation Invariant Local Binary Patterns

We start the derivation of our gray scale and rotation invariant texture operator by defining texture T in a local neighborhood of a monochrome texture image as the joint distribution of the gray levels of P ($P>1$) image pixels:

$$T = t(g_c, g_0, \dots, g_{P-1}) \quad (1)$$

where gray value g_c corresponds to the gray value of the center pixel of the local neighborhood and g_p ($p=0, \dots, P-1$) correspond to the gray values of P equally spaced pixels on a circle of radius R ($R>0$) that form a circularly symmetric neighbor set. If the coordinates of g_c are $(0,0)$, then the coordinates of g_p are given by $(-R\sin(2\pi p/P), R\cos(2\pi p/P))$. Fig. 1 illustrates circularly symmetric neighbor sets for various (P,R) . The gray values of neighbors which do not fall exactly in the center of pixels are estimated by interpolation.

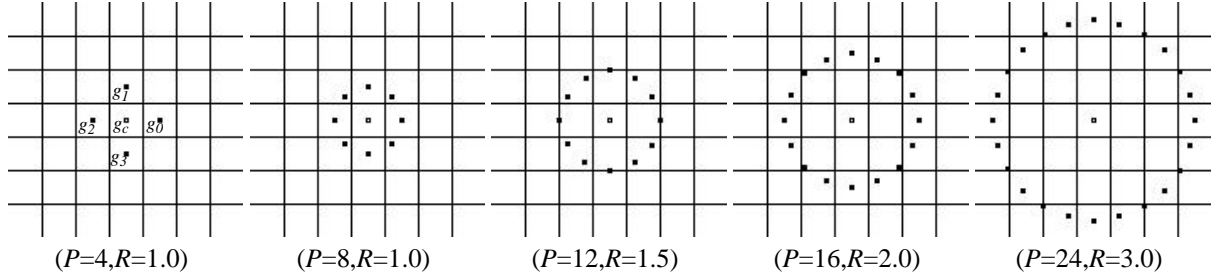


Fig. 1. Circularly symmetric neighbor sets for different (P, R) .

2.1 Achieving Gray Scale Invariance

As the first step towards gray scale invariance we subtract, without losing information, the gray value of the center pixel (g_c) from the gray values of the circularly symmetric neighborhood g_p ($p=0, \dots, P-1$) giving:

$$T = t(g_c, g_0 - g_c, g_1 - g_c, \dots, g_{P-1} - g_c) \quad (2)$$

Next, we assume that differences $g_p - g_c$ are independent of g_c , which allows us to factorize Eq.(2):

$$T \approx t(g_c) t(g_0 - g_c, g_1 - g_c, \dots, g_{P-1} - g_c) \quad (3)$$

In practice an exact independence is not warranted, hence the factorized distribution is only an approximation of the joint distribution. However, we are willing to accept the possible small loss in information, as it allows us to achieve invariance with respect to shifts in gray scale. Namely, the distribution $t(g_c)$ in Eq.(3) describes the overall luminance of the image, which is unrelated to local image texture, and consequently does not provide useful information for texture analysis. Hence, much of the information in the original joint gray level distribution (Eq.(1)) about the textural characteristics is conveyed by the joint difference distribution [29]:

$$T \approx t(g_0 - g_c, g_1 - g_c, \dots, g_{P-1} - g_c) \quad (4)$$

This is a highly discriminative texture operator. It records the occurrences of various patterns in the neighborhood of each pixel in a P -dimensional histogram. For constant regions, the differences are zero in all directions. On a slowly sloped edge, the operator records the highest difference in the gradient direction and zero values along the edge, and for a spot the differences are high in all directions.

Signed differences $g_p - g_c$ are not affected by changes in mean luminance, hence the joint difference distribution is invariant against gray scale shifts. We achieve invariance with respect to the scaling of the gray scale by considering just the signs of the differences instead of their exact values:

$$T \approx t(s(g_0 - g_c), s(g_1 - g_c), \dots, s(g_{P-1} - g_c)) \quad (5)$$

where

$$s(x) = \begin{cases} 1, & x \geq 0 \\ 0, & x < 0 \end{cases} \quad (6)$$

By assigning a binomial factor 2^p for each sign $s(g_p - g_0)$, we transform Eq.(5) into a unique $LBP_{P,R}$ number that characterizes the spatial structure of the local image texture:

$$LBP_{P,R} = \sum_{p=0}^{P-1} s(g_p - g_0) 2^p \quad (7)$$

The name ‘Local Binary Pattern’ reflects the functionality of the operator, i.e. a local neighborhood is thresholded at the gray value of the center pixel into a binary pattern. $LBP_{P,R}$ operator is by definition invariant against any monotonic transformation of the gray scale, i.e. as long as the order of the gray values in the image stays the same, the output of the $LBP_{P,R}$ operator remains constant.

If we set $(P=8, R=1)$, we obtain $LBP_{8,1}$ which is similar to the LBP operator we proposed in [28]. The two differences between $LBP_{8,1}$ and LBP are: 1) the pixels in the neighbor set are indexed so that they form a circular chain, and 2) the gray values of the diagonal pixels are determined by interpolation. Both modifications are necessary to obtain the circularly symmetric neighbor set, which allows for deriving a rotation invariant version of $LBP_{P,R}$.

2.2 Achieving Rotation Invariance

The $LBP_{P,R}$ operator produces 2^P different output values, corresponding to the 2^P different binary patterns that can be formed by the P pixels in the neighbor set. When the image is rotated, the gray values g_p will correspondingly move along the perimeter of the circle around g_0 . Since g_0 is always assigned to be the gray value of element $(0, R)$, to the right of g_c , rotating

a particular binary pattern naturally results in a different $LBP_{P,R}$ value. This does not apply to patterns comprising of only 0's (or 1's) which remain constant at all rotation angles. To remove the effect of rotation, i.e. to assign a unique identifier to each rotation invariant local binary pattern we define:

$$LBP_{P,R}^{ri} = \min\{ROR(LBP_{P,R}, i) \mid i= 0,1,\dots,P-1\} \quad (8)$$

where $ROR(x,i)$ performs a circular bit-wise right shift on the P -bit number x i times. In terms of image pixels Eq.(8) simply corresponds to rotating the neighbor set clockwise so many times that a maximal number of the most significant bits, starting from g_{P-1} , are 0.

$LBP_{P,R}^{ri}$ quantifies the occurrence statistics of individual rotation invariant patterns corresponding to certain microfeatures in the image, hence the patterns can be considered as feature detectors. Fig. 2 illustrates the 36 unique rotation invariant local binary patterns that can occur in the case of $P=8$, i.e. $LBP_{8,R}^{ri}$ can have 36 different values. For example, pattern #0 detects bright spots, #8 dark spots and flat areas, and #4 edges. If we set $R=1$, $LBP_{8,I}^{ri}$ corresponds to the gray scale and rotation invariant operator that we designated as $LBPROT$ in [30].

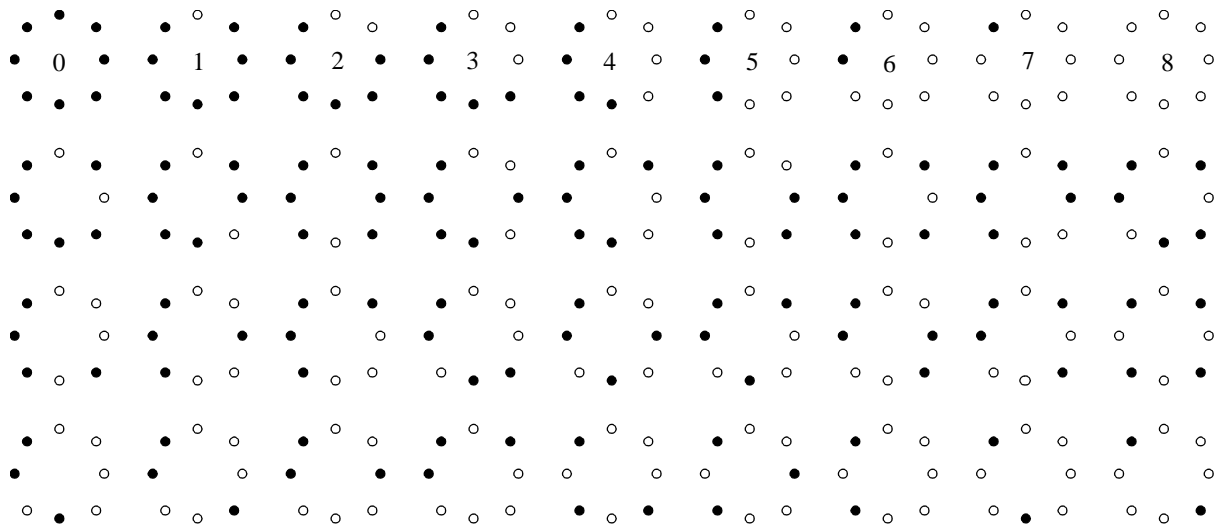


Fig. 2. The 36 unique rotation invariant binary patterns that can occur in the circularly symmetric neighbor set of $LBP_{8,R}^{ri}$. Black and white circles correspond to bit values of 0 and 1 in the 8-bit output of the operator. The first row contains the nine 'uniform' patterns, and the numbers inside them correspond to their unique $LBP_{8,R}^{riu2}$ codes.

2.3 Improved Rotation Invariance with ‘Uniform’ Patterns and Finer Quantization of the Angular Space

Our practical experience, however, has shown that *LBPROT* as such does not provide very good discrimination, as we also concluded in [30]. There are two reasons: the occurrence frequencies of the 36 individual patterns incorporated in *LBPROT* vary greatly, and the crude quantization of the angular space at 45° intervals.

We have observed that certain local binary patterns are fundamental properties of texture, providing vast majority, sometimes over 90%, of all 3x3 patterns present in the observed textures. This is demonstrated in more detail in Section 3 with statistics of the image data used in the experiments. We call these fundamental patterns ‘uniform’ as they have one thing in common, namely uniform circular structure that contains very few spatial transitions. ‘Uniform’ patterns are illustrated on the first row of Fig. 2. They function as templates for microstructures such as spot (0), flat area or dark spot (8) and edges of varying positive and negative curvature (1-7).

To formally define the ‘uniform’ patterns, we introduce a uniformity measure $U(\text{‘pattern’})$, which corresponds to the number of spatial transitions (bitwise 0/1 changes) in the ‘pattern’. For example, patterns 00000000_2 and 11111111_2 have U value of 0, while the other seven patterns in the first row of Fig. 2 have U value of 2, as there are exactly two 0/1 transitions in the pattern. Similarly, other 27 patterns have U value of at least 4. We designate patterns that have U value of at most 2 as ‘uniform’ and propose the following operator for gray scale and rotation invariant texture description instead of $LBP_{P,R}^{ri}$:

$$LBP_{P,R}^{riu2} = \begin{cases} \sum_{p=0}^{P-1} s(g_p - g_c) & \text{if } U(LBP_{P,R}) \leq 2 \\ P + 1 & \text{otherwise} \end{cases} \quad (9)$$

where

$$U(LBP_{P,R}) = |s(g_{P-1} - g_c) - s(g_0 - g_c)| + \sum_{p=1}^{P-1} |s(g_p - g_c) - s(g_{p-1} - g_c)| \quad (10)$$

Superscript $riu2$ reflects the use of rotation invariant ‘uniform’ patterns that have U value of

at most 2. By definition exactly $P+1$ ‘uniform’ binary patterns can occur in a circularly symmetric neighbor set of P pixels. Eq.(9) assigns a unique label to each of them, corresponding to the number of ‘1’ bits in the pattern ($0 \rightarrow P$), while the ‘nonuniform’ patterns are grouped under the ‘miscellaneous’ label ($P+1$). In Fig. 2 the labels of the ‘uniform’ patterns are denoted inside the patterns. In practice the mapping from $LBP_{P,R}$ to $LBP_{P,R}^{riu2}$, which has $P+2$ distinct output values, is best implemented with a lookup table of 2^P elements.

The final texture feature employed in texture analysis is the histogram of the operator outputs (i.e. pattern labels) accumulated over a texture sample. The reason why the histogram of ‘uniform’ patterns provides better discrimination in comparison to the histogram of all individual patterns comes down to differences in their statistical properties. The relative proportion of ‘nonuniform’ patterns of all patterns accumulated into a histogram is so small that their probabilities can not be estimated reliably. Inclusion of their noisy estimates in the (dis)similarity analysis of sample and model histograms would deteriorate performance.

We noted earlier that the rotation invariance of $LBPROT$ ($LBP_{8,I}^{ri}$) is hampered by the crude 45° quantization of the angular space provided by the neighbor set of eight pixels. A straightforward fix is to use a larger P , since the quantization of the angular space is defined by $(360^\circ/P)$. However, certain considerations have to be taken into account in the selection of P . First, P and R are related in the sense that the circular neighborhood corresponding to a given R contains a limited number of pixels (e.g. 9 for $R=1$), which introduces an upper limit to the number of nonredundant sampling points in the neighborhood. Second, an efficient implementation with a lookup of 2^P elements sets a practical upper limit for P . In this study we explore P values up to 24, which requires a lookup table of 16 MB that can be easily managed by a modern computer.

2.4 Rotation Invariant Variance Measures of the Contrast of Local Image Texture

The $LBP_{P,R}^{riu2}$ operator is a gray scale invariant measure, i.e. its output is not affected by any monotonic transformation of the gray scale. It is an excellent measure of the spatial pattern, but it by definition discards contrast. If gray scale invariance is not required and we wanted to incorporate the contrast of local image texture as well, we can measure it with a rota-

tion invariant measure of local variance:

$$VAR_{P,R} = \frac{1}{P} \sum_{p=0}^{P-1} (g_p - \mu)^2, \quad \text{where } \mu = \frac{1}{P} \sum_{p=0}^{P-1} g_p \quad (11)$$

$VAR_{P,R}$ is by definition invariant against shifts in gray scale. Since $LBP_{P,R}^{riu2}$ and $VAR_{P,R}$ are complementary, their joint distribution $LBP_{P,R}^{riu2}/VAR_{P,R}$ is expected to be a very powerful rotation invariant measure of local image texture. Note that even though we in this study restrict ourselves to using only joint distributions of $LBP_{P,R}^{riu2}$ and $VAR_{P,R}$ operators that have the same (P,R) values, nothing would prevent us from using joint distributions of operators computed at different neighborhoods.

2.5 Nonparametric Classification Principle

In the classification phase, we evaluate the (dis)similarity of sample and model histograms as a test of goodness-of-fit, which is measured with a nonparametric statistical test. By using a nonparametric test we avoid making any, possibly erroneous, assumptions about the feature distributions. There are many well known goodness-of-fit statistics such as the chi-square statistic and the G (log likelihood ratio) statistic [34]. In this study a test sample S was assigned to the class of the model M that maximized the log likelihood statistic:

$$L(S, M) = \sum_{b=1}^B S_b \log M_b \quad (12)$$

where B is the number of bins, and S_b and M_b correspond to the sample and model probabilities at bin b , respectively. Eq.(12) is a straightforward simplification of the G (log likelihood ratio) statistic:

$$G(S, M) = 2 \sum_{b=1}^B S_b \log \frac{S_b}{M_b} = 2 \sum_{b=1}^B [S_b \log S_b - S_b \log M_b] \quad (13)$$

where the first term of the right hand expression can be ignored as a constant for a given S .

L is a nonparametric (pseudo-)metric that measures likelihoods that sample S is from alternative texture classes, based on exact probabilities of feature values of pre-classified texture

models M . In the case of the joint distribution $LBP_{P,R}^{riu2}/VAR_{P,R}$, Eq.(12) was extended in a straightforward manner to scan through the two-dimensional histograms.

Sample and model distributions were obtained by scanning the texture samples and prototypes with the chosen operator, and dividing the distributions of operator outputs into histograms having a fixed number of B bins. Since $LBP_{P,R}^{riu2}$ has a completely defined set of discrete output values ($0 \rightarrow P+1$), no additional binning procedure is required, but the operator outputs are directly accumulated into a histogram of $P+2$ bins. Each bin effectively provides an estimate of the probability of encountering the corresponding pattern in the texture sample or prototype. Spatial dependencies between adjacent neighborhoods are inherently incorporated in the histogram, because only a small subset of patterns can reside next to a given pattern.

Variance measure $VAR_{P,R}$ has a continuous-valued output, hence quantization of its feature space is needed. This was done by adding together feature distributions for every single model image in a total distribution, which was divided into B bins having an equal number of entries. Hence, the cut values of the bins of the histograms corresponded to the $(100/B)$ percentile of the combined data. Deriving the cut values from the total distribution and allocating every bin the same amount of the combined data guarantees that the highest resolution of quantization is used where the number of entries is largest and *vice versa*. The number of bins used in the quantization of the feature space is of some importance, as histograms with a too modest number of bins fail to provide enough discriminative information about the distributions. On the other hand, since the distributions have a finite number of entries, a too large number of bins may lead to sparse and unstable histograms. As a rule of thumb, statistics literature often proposes that an average number of 10 entries per bin should be sufficient. In the experiments we set the value of B so that this condition is satisfied.

2.6 Multiresolution Analysis

We have presented general rotation-invariant operators for characterizing the spatial pattern and the contrast of local image texture using a circularly symmetric neighbor set of P pixels placed on a circle of radius R . By altering P and R we can realize operators for any quantization of the angular space and for any spatial resolution. Multiresolution analysis can be accom-

plished by combining the information provided by multiple operators of varying (P,R) .

In this study we perform straightforward multiresolution analysis by defining the aggregate (dis)similarity as the sum of individual log-likelihoods computed from the responses of individual operators

$$L_N = \sum_{n=1}^N L(S^n, M^n) \quad (14)$$

where N is the number of operators, and S^n and M^n correspond to the sample and model histograms extracted with operator n ($n=1, \dots, N$), respectively. This expression is based on the additivity property of the G statistic (Eq.(13)), i.e. the results of several G tests can be summed to yield a meaningful result. If X and Y are independent random events, and $S_X, S_Y, M_X,$ and M_Y are the respective marginal distributions for S and M , then $G(S_{XY}, M_{XY}) = G(S_X, M_X) + G(S_Y, M_Y)$ [19].

Generally, the assumption of independence between different texture features does not hold. However, estimation of exact joint probabilities is not feasible due to statistical unreliability and computational complexity of large multidimensional histograms. For example, the joint histogram of $LBP_{8,R}^{riu2}, LBP_{16,R}^{riu2}$ and $LBP_{24,R}^{riu2}$ would contain 4680 ($10 \times 18 \times 26$) cells. To satisfy the rule of thumb for statistical reliability, i.e. at least 10 entries per cell on average, the image should be of roughly $(216+2R)(216+2R)$ pixels in size. Hence, high dimensional histograms would only be reliable with really large images, which renders them impractical. Large multidimensional histograms are also computationally expensive, both in terms of computing speed and memory consumption.

We have recently successfully employed this approach also in texture segmentation, where we quantitatively compared different alternatives for combining individual histograms for multiresolution analysis [26]. In this study we restrict ourselves to combinations of at most three operators.

3 Experiments

We demonstrate the performance of our approach with two different problems of rotation invariant texture analysis. Experiment #1 is replicated from a recent study on rotation invariant

texture classification by Porter and Canagarajah [32], for the purpose of obtaining comparative results to other methods. Image data includes 16 source textures captured from the Brodatz album [4]. Considering this in conjunction with the fact that rotated textures are generated from the source textures digitally, this image data provides a slightly simplified but highly controlled problem for rotation invariant texture analysis. In addition to the original experimental setup, where training was based on multiple rotation angles, we also consider a more challenging setup, where the texture classifier is trained at only one particular rotation angle and then tested with samples from other rotation angles.

Experiment #2 involves a new set of texture images [27], which have a natural tactile dimension and natural appearance of local intensity distortions caused by the tactile dimension. Some source textures have large intra class variation in terms of color content, which results in highly different gray scale properties in the intensity images. Adding the fact that the textures were captured using three different illuminants of different color spectra, this image data presents a very realistic and challenging problem for illumination and rotation invariant texture analysis.

To incorporate three different spatial resolutions and three different angular resolutions, we realized $LBP_{P,R}^{riu2}$ and $VAR_{P,R}$ with (P,R) values of (8,1), (16,2), and (24,3) in the experiments. Corresponding circularly symmetric neighborhoods are illustrated in Fig. 1. In multiresolution analysis we use the three 2-resolution combinations and the one 3-resolution combination these three alternatives can form.

Before going into the experiments, we take a quick look at the statistical foundation of $LBP_{P,R}^{riu2}$. In the case of $LBP_{8,R}^{riu2}$ we choose nine ‘uniform’ patterns out of the 36 possible patterns, merging the remaining 27 under the ‘miscellaneous’ label. Similarly, in the case of $LBP_{16,R}^{riu2}$ we consider only 7% (17 out of 243) of the possible rotation invariant patterns. Taking into account a minority of the possible patterns, and merging a majority of them, could imply that we are throwing away most of the pattern information. However, this is not the case, as the ‘uniform’ patterns appear to be fundamental properties of local image texture, as illustrated by the numbers in Table 1.

Table 1: Proportions (%) of ‘uniform’ patterns of all patterns for each texture used in the experiments, and their average proportion over all textures.

Experiment #1				Experiment #2						
Texture	$P=8$	$P=16$	$P=25$	Texture	$P=8, R=1$			$P=16, R=2$	$P=24, R=3$	
	$R=1$	$R=2$	$R=3$		‘inca’	‘tl84’	‘horizon’	total	total	total
<i>canvas</i>	84.8	58.5	41.2	<i>canvas001</i>	91.4	90.9	90.4	90.9	71.2	53.4
<i>cloth</i>	91.8	74.2	52.8	<i>canvas002</i>	92.6	91.7	91.1	91.8	73.2	54.2
<i>cotton</i>	88.9	67.0	46.3	<i>canvas003</i>	89.6	89.3	88.2	89.0	68.2	50.4
<i>grass</i>	85.5	63.3	45.6	<i>canvas005</i>	93.5	93.1	93.3	93.3	78.0	61.2
<i>leather</i>	87.7	66.6	49.1	<i>canvas006</i>	87.4	86.4	86.5	86.8	60.8	42.2
<i>matting</i>	89.5	72.0	55.8	<i>canvas009</i>	83.2	82.3	81.9	82.4	59.3	43.8
<i>paper</i>	89.2	70.9	52.9	<i>canvas011</i>	90.6	89.3	89.0	89.6	67.1	48.6
<i>pigskin</i>	87.6	67.9	50.9	<i>canvas021</i>	85.6	85.6	85.4	85.5	57.6	41.0
<i>raffia</i>	91.4	76.4	59.1	<i>canvas022</i>	92.3	91.1	91.0	91.4	78.1	65.0
<i>rattan</i>	86.1	68.5	52.4	<i>canvas023</i>	91.1	90.6	90.2	90.6	69.7	50.9
<i>reptile</i>	88.4	70.9	55.6	<i>canvas025</i>	93.2	92.8	92.7	92.9	76.1	55.0
<i>sand</i>	89.1	70.7	53.4	<i>canvas026</i>	92.2	91.8	91.5	91.8	68.0	47.8
<i>straw</i>	83.8	56.6	40.7	<i>canvas031</i>	93.0	92.5	92.4	92.6	74.3	55.8
<i>weave</i>	76.6	50.9	32.1	<i>canvas032</i>	89.8	88.8	89.4	89.3	66.4	49.0
<i>wood</i>	86.1	65.1	46.1	<i>canvas033</i>	92.8	92.1	91.8	92.2	75.0	56.2
<i>wool</i>	88.9	71.0	55.0	<i>canvas035</i>	90.4	90.1	89.4	90.0	68.4	50.4
AVERAGE	87.2	66.9	49.3	<i>canvas038</i>	91.0	89.7	89.8	90.1	71.4	54.6
				<i>canvas039</i>	92.7	91.7	91.6	92.0	75.8	59.0
				<i>tile005</i>	90.0	89.6	88.3	89.3	71.5	54.3
				<i>tile006</i>	91.0	90.5	89.7	90.4	74.0	57.8
				<i>carpet002</i>	82.8	83.6	81.1	82.5	65.5	55.6
				<i>carpet004</i>	87.6	87.1	86.3	87.0	70.8	57.8
				<i>carpet005</i>	92.2	91.6	91.0	91.6	79.6	67.9
				<i>carpet009</i>	90.8	90.5	89.7	90.3	77.4	64.5
				AVERAGE	90.3	89.7	89.2	89.7	70.7	54.0

In the case of the image data of Experiment #1, the nine ‘uniform’ patterns of $LBP_{8,I}^{riu2}$ contribute from 76.6% up to 91.8% of the total pattern data, averaging 87.2%. The most frequent individual pattern is symmetric edge detector 00001111₂ with 18.0% share, followed by 00011111₂ (12.8%) and 00000111₂ (11.8%), hence these three patterns contribute 42.6% of the textures. As expected, in the case of $LBP_{16,I}^{riu2}$ the 17 ‘uniform’ patterns contribute a smaller proportion of the image data, from 50.9% up to 76.4% of the total pattern data, averaging 66.9%. The most frequent pattern is the flat area/dark spot detector 1111111111111111₂ with 8.8% share.

The numbers for the image data of Experiment #2 are remarkably similar. The contribution of the nine ‘uniform’ patterns of $LBP_{8,I}^{riu2}$ totaled over the three illuminants (see Section 3.2.1) ranges from 82.4% to 93.3%, averaging 89.7%. The three most frequent patterns are again 00001111₂ (18.9%), 00000111₂ (15.2%) and 00011111₂ (14.5%), totalling 48.6% of the patterns. The contribution of the 17 ‘uniform’ patterns of $LBP_{16,2}^{riu2}$ ranges from 57.6% to

79.6%, averaging 70.7%. The most frequent patterns is again 1111111111111111_2 with 8.7% share. In the case of $LBP_{24,3}^{riu2}$ the 25 ‘uniform’ patterns contribute 54.0% of the local texture. The two most frequent patterns are the flat area/dark spot detector (all bits ‘1’) with 8.6% share and the bright spot detector (all bits ‘0’) with 8.2% share.

3.1 Experiment #1

In their comprehensive study, Porter and Canagarajah [32] presented three feature extraction schemes for rotation invariant texture classification, employing the wavelet transform, a circularly symmetric Gabor filter, and a Gaussian Markov Random Field with a circularly symmetric neighbor set. They concluded that the wavelet-based approach was the most accurate and exhibited the best noise performance, having also the lowest computational complexity.

3.1.1. Image Data and Experimental Setup

The image data included 16 texture classes from the Brodatz album [4] shown in Fig. 3. For each texture class there were eight 256x256 source images, of which the first was used for training the classifier, while the other seven images were used to test the classifier. Porter and Canagarajah created 180x180 images of rotated textures from these source images using bilinear interpolation. If the rotation angle was a multiple of 90 degrees (0° or 90° in the case of present ten rotation angles), a small amount of artificial blur was added to the images to simulate the effect of blurring on rotation at other angles. It should be stressed that the source textures were captured from sheets in the Brodatz album and that the rotated textures were generated digitally from the source images. Consequently, the rotated textures do not have any local intensity distortions such as shadows, which could be caused when a real texture with a natural tactile dimension was rotated with respect to an illuminant and a camera. Thus, this image data provides a slightly simplified but highly controlled problem for rotation invariant texture analysis.

In the original experimental setup, the texture classifier was trained with several 16x16 sub-images extracted from the training image. This fairly small size of training samples increases the difficulty of the problem nicely. The training set comprised rotation angles 0° , 30° , 45° ,

and 60° , while the textures for classification were presented at rotation angles 20° , 70° , 90° , 120° , 135° , and 150° . Consequently, the test data included 672 samples, 42 (6 angles x 7 images) for each of the 16 texture classes. Using a Mahalanobis distance classifier, Porter and Canagarajah reported 95.8% classification accuracy for the rotation invariant wavelet-based features as the best result.

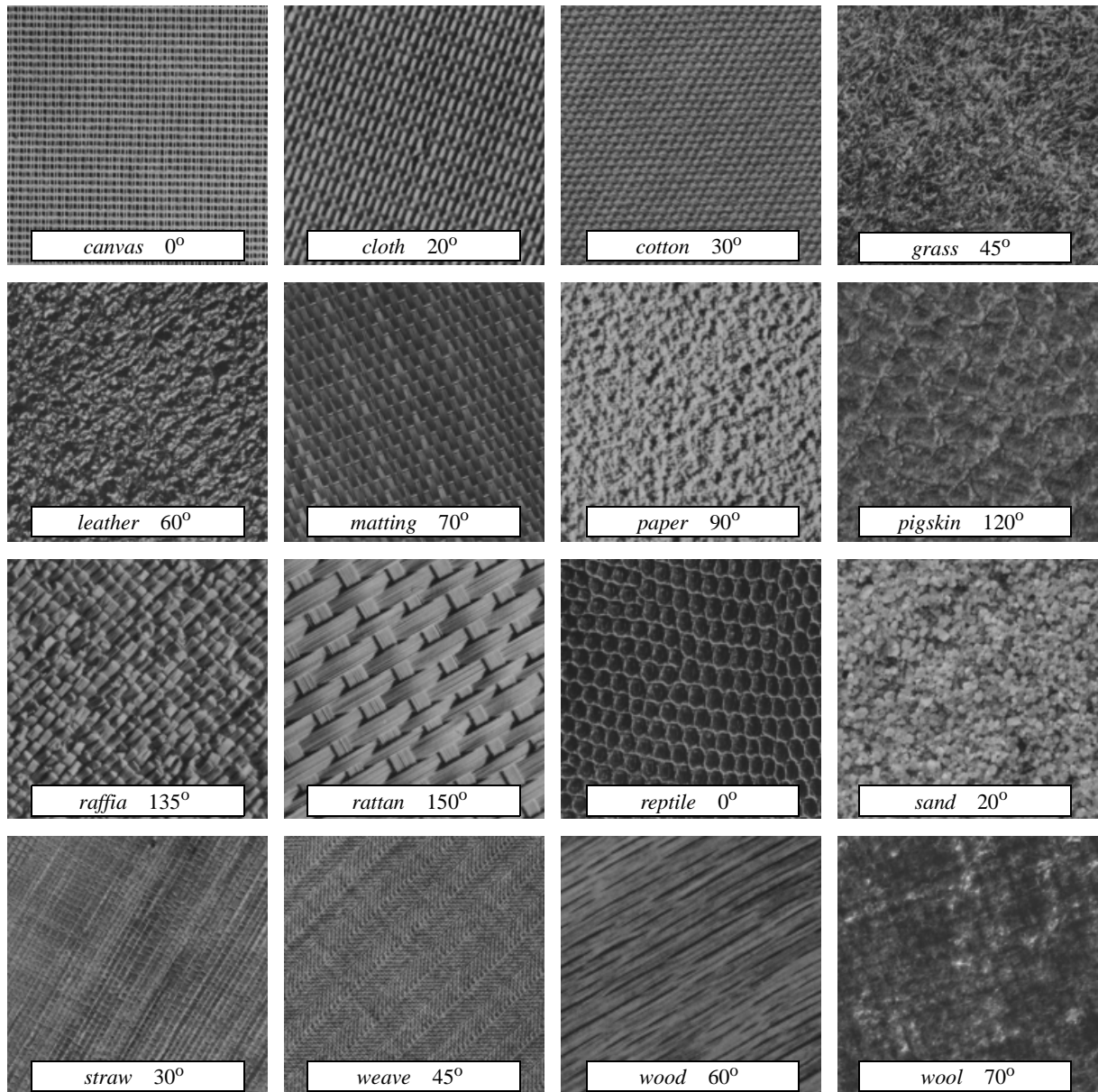


Fig. 3. 180x180 samples of the 16 textures used in Experiment #1 at particular angles.

3.1.2. Experimental Results

We started replicating the original experimental setup by dividing the 180x180 images of the four training angles (0° , 30° , 45° , and 60°) into 121 disjoint 16x16 subimages. In other

words we had 7744 training samples, 484 (4 angles x 121 samples) in each of the 16 texture classes. We first computed the histogram of the chosen operator for each of the 16x16 samples. Then we added the histograms of all samples belonging to a particular class into one big model histogram for this class, since the histograms of single 16x16 samples would have been too sparse to be reliable models. Also, using 7744 different models would have resulted in computational overhead, for in the classification phase the sample histograms were compared to every model histogram. Consequently, we obtained 16 reliable model histograms containing $484(16-2R)^2$ entries (the operators have a R pixel border). The performance of the operators was evaluated with the 672 testing images. Their sample histograms contained $(180-2R)^2$ entries, hence we did not have to worry about their stability.

Results in Table 2 correspond to the percentage of correctly classified samples of all testing samples. As expected, $LBP_{16,2}^{riu2}$ and $LBP_{24,3}^{riu2}$ clearly outperformed their simpler counterpart $LBP_{8,1}^{riu2}$, which had difficulties in discriminating strongly oriented textures, as misclassifications of *rattan*, *straw* and *wood* contributed 70 of the 79 misclassified samples. Interestingly, in all 79 cases the model of the true class ranked second right after the most similar model of a false class that led to misclassification. $LBP_{16,2}^{riu2}$ did much better, classifying all samples correctly except ten *grass* samples that were assigned to *leather*. Again, in all ten cases the model of the true class ranked second. $LBP_{24,3}^{riu2}$ provided further improvement by missing just five *grass* samples and a *matting* sample. In all six cases the model of the true class again ranked second.

Combining the $LBP_{P,R}^{riu2}$ operator with the $VAR_{P,R}$ operator, which did not too badly by itself, generally improved the performance. The lone exception was (24,3) where the addition of the poorly performing $VAR_{24,3}$ only hampered the excellent discrimination by $LBP_{24,3}^{riu2}$. We see that $LBP_{16,2}^{riu2}/VAR_{16,2}$ fell one sample short of a faultless result, as a *straw* sample at 90° angle was labeled as *grass*.

The results for single resolutions are so good that there is not much room for improvement by the multiresolution analysis, though two joint distributions provided a perfect classification.

The largest gain was achieved for the $VAR_{P,R}$ operator, especially when $VAR_{24,3}$ was excluded.

Table 2: Classification accuracies (%) for the original experimental setup, where training is done with rotations 0° , 30° , 45° , and 60° .

P,R	$LBP_{P,R}^{riu2}$		$VAR_{P,R}$		$LBP_{P,R}^{riu2}/VAR_{P,R}$	
	BINS	RESULT	BINS	RESULT	BINS	RESULT
8,1	10	88.2	128	95.5	10/16	98.4
16,2	18	98.5	128	88.4	18/16	99.9
24,3	26	99.1	128	86.6	26/16	96.4
8,1+16,2	10+18	99.0	128+128	98.7	10/16+18/16	99.7
8,1+24,3	10+26	99.6	128+128	98.4	10/16+26/16	100.0
16,2+24,3	18+26	99.0	128+128	87.9	18/16+26/16	99.1
8,1+16,2+24,3	10+18+26	99.1	128+128+128	96.6	10/16+18/16+26/16	100.0

Note that we voluntarily discarded the knowledge that training samples come from four different rotation angles, merging all sample histograms into a single model for each texture class. Hence the final texture model was an ‘average’ of the models of the four training angles, which actually decreased the performance to a certain extent. If we had used four separate models, one for each training angle, for example $LBP_{16,2}^{riu2}/VAR_{16,2}$ would have provided a perfect classification, and the classification error of $LBP_{16,2}^{riu2}$ would have been halved.

Even though a direct comparison to the results of Porter and Canagarajah may not be meaningful due to the different classification principle, the excellent results for our operators demonstrate their suitability for rotation invariant texture classification.

Table 3 presents results for a more challenging experimental setup, where the classifier was trained with samples of just one rotation angle and tested with samples of other nine rotation angles. We trained the classifier with the 121 16x16 samples extracted from the designated training image, again merging the histograms of the 16x16 samples of a particular texture class into one model histogram. The classifier was tested with the samples obtained from the other nine rotation angles of the seven source images reserved for testing purposes, totaling 1008 samples, 63 in each of the 16 texture classes. Note that the seven testing images in each texture class are physically different from the one designated training image, hence this setup is a true test for the texture operators’ ability to produce a rotation invariant representation of local

image texture that also generalizes to physically different samples.

Table 3: Classification accuracies (%) when training is done at just one rotation angle, and the average accuracy over the ten angles.

OPERATOR	P,R	BINS	TRAINING ANGLE										AVERAGE
			0°	20°	30°	45°	60°	70°	90°	120°	135°	150°	
$LBP_{P,R}^{riu2}$	8,1	10	68.7	86.4	84.7	76.4	85.0	84.3	69.4	84.4	76.3	84.8	80.1
	16,2	18	96.2	99.0	98.6	98.9	98.5	99.1	97.6	98.6	98.7	97.5	98.3
	24,3	26	98.7	98.9	0.9	97.6	99.2	98.2	100	98.7	96.7	98.0	98.5
	8,1+16,2	10+18	94.3	99.5	99.8	99.8	98.5	97.2	92.9	99.6	99.2	99.2	98.0
	8,1+24,3	10+26	96.2	99.6	99.4	98.6	99.4	98.9	97.2	99.5	98.3	99.4	98.7
	16,2+24,3	18+26	97.7	100	99.8	99.2	99.3	100	99.6	99.4	98.5	98.4	99.2
	8,1+16,2+24,3	10+18+26	97.6	100	100	100	100	100	98.5	100	98.6	99.8	99.4
$VAR_{P,R}$	8,1	128	92.7	96.6	94.6	94.0	95.6	96.9	93.9	94.2	94.6	95.6	94.9
	16,2	128	89.9	84.5	86.2	90.5	87.3	85.6	91.0	89.8	90.8	88.5	88.4
	24,3	128	85.4	86.4	85.7	84.4	85.4	85.6	86.0	86.7	86.3	85.9	85.8
	8,1+16,2	128+128	97.5	96.9	98.8	99.0	97.9	97.7	97.5	99.1	98.8	97.9	98.1
	8,1+24,3	128+128	95.2	97.0	98.7	98.9	97.5	98.5	96.1	99.5	99.0	97.9	97.8
	16,2+24,3	128+128	88.3	86.5	86.8	86.9	85.5	86.5	89.3	86.9	87.5	87.1	87.1
	8,1+16,2+24,3	128+128+128	94.9	94.6	97.0	98.3	96.2	96.2	95.0	98.2	98.1	97.3	96.6
$LBP_{P,R}^{riu2}VAR_{P,R}$	8,1	10/16	99.1	94.2	95.7	97.3	95.2	94.4	99.3	96.0	97.3	95.6	96.4
	16,2	18/16	100	99.5	99.4	99.4	99.4	99.6	100	99.5	99.5	99.7	99.6
	24,3	26/16	95.8	95.0	96.2	97.4	96.0	95.5	95.6	97.2	97.9	97.9	96.5
	8,1+16,2	10/16+18/16	100	99.3	99.1	99.2	99.3	99.2	100	99.3	99.3	99.4	99.4
	8,1+24,3	10/16+26/16	99.8	99.8	99.6	99.8	99.6	99.8	99.6	99.7	99.8	99.9	99.7
	16,2+24,3	18/16+26/16	97.2	98.9	98.9	99.8	99.6	99.9	97.3	99.6	99.8	99.9	99.1
	8,1+16,2+24,3	10/16+18/16+26/16	100	99.7	99.5	99.8	99.6	99.7	99.8	99.6	99.8	99.9	99.7

Training with just one rotation angle allows a more conclusive analysis of the rotation invariance of our operators. For example, it is hardly surprising that $LBP_{8,1}^{riu2}$ provides worst performance when the training angle is a multiple of 45° . Due to the crude quantization of the angular space the presentations learned at 0° , 45° , 90° , or 135° do not generalize that well to other angles.

Again, the importance of the finer quantization of the angular space shows, as $LBP_{16,2}^{riu2}$ and $LBP_{24,3}^{riu2}$ provide a solid performance with average classification accuracy of 98.3% and 98.5%, respectively. In the case of the 173 misclassifications by $LBP_{16,2}^{riu2}$ the model of the true class ranked always second. In the case of the 149 misclassifications by $LBP_{24,3}^{riu2}$ the

model of the true class ranked second 117 times and third 32 times.

There is a strong suspicion that the weaker results for $LBP_{16,2}^{riu2}$ at training angles 0° and 90° were due to the artificial blur added to the original images at angles 0° and 90° . The effect of the blur can also be seen in the results of the joint distributions $LBP_{8,1}^{riu2}/VAR_{8,1}$ and $LBP_{16,2}^{riu2}/VAR_{16,2}$, which achieved best performance when the training angle is either 0° or 90° , the (16,2) joint operator providing in fact a perfect classification in these cases. Namely, when training was done at some other rotation angle, test angles 0° and 90° contributed most of the misclassified samples, actually all of them in the case of $LBP_{16,2}^{riu2}/VAR_{16,2}$. Nevertheless, the result for $LBP_{16,2}^{riu2}/VAR_{16,2}$ is quite excellent, whereas $LBP_{24,3}^{riu2}/VAR_{24,3}$ seems to suffer from the poor discrimination of the variance measure.

Even though the results for multiresolution analysis generally exhibit improved discrimination over single resolutions, they also serve as a welcome reminder that the addition of inferior operator does not necessarily enhance the performance.

3.2 Experiment #2

3.2.1. Image Data and Experimental Setup

In this experiment we used textures from Outex, which is a publicly available (<http://www.outex.oulu.fi>) framework for experimental evaluation of texture analysis algorithms [27]. Outex provides a large collection of textures and ready-made test suites for different types of texture analysis problems, together with baseline results for well known published algorithms.

The surface textures available in the Outex image database are captured using the setup shown in Fig. 4a. It includes a Macbeth SpectraLight II Luminare light source and a Sony DXC-755P three chip CCD camera attached to a robot arm. A workstation controls the light source for the purpose of switching on the desired illuminant, the camera for the purpose of selecting desired zoom dictating the spatial resolution, the robot arm for the purpose of rotating the camera into the desired rotation angle and the frame grabber for capturing 24-bit RGB images of size 538 (height) x 716 (width) pixels. The relative positions of a texture sample, illuminant and camera are illustrated in Fig 4b.

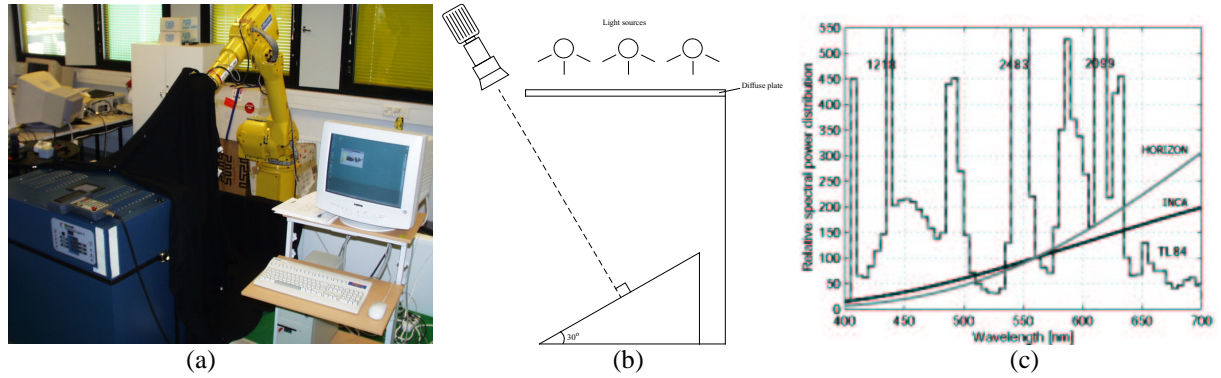


Fig. 4. a) Imaging setup. b) Relative positions of texture sample, illuminant and camera. (c) Spectra of the illuminants.

Each texture available at the site is captured using three different simulated illuminants provided in the light source: 2300K horizon sunlight denoted as ‘horizon’, 2856K incandescent CIE A denoted as ‘inca’, and 4000K fluorescent tl84 denoted as ‘tl84’. The spectra of the illuminants are shown in Fig. 4c. The camera is calibrated using the ‘inca’ illuminant. It should be noted that despite of the diffuse plate the imaging geometry is different for each illuminant, due to their different physical location in the light source. Each texture is captured using six spatial resolutions (100, 120, 300, 360, 500 and 600 dpi) and nine rotation angles (0° , 5° , 10° , 15° , 30° , 45° , 60° , 75° and 90°), hence 162 images are captured from each texture.

The frame grabber produces rectangular pixels, whose aspect ratio (height/width) is roughly 1.04. The aspect ratio is corrected by stretching the images in horizontal direction to size 538x746 using Matlab’s *imresize* command with bilinear interpolation. Bilinear interpolation is employed instead of bicubic, because the latter may introduce halos or extra noise around edges or in areas of high contrast, which would be harmful to texture analysis. Horizontal stretching is used instead of vertical size reduction, because sampling images captured by an interline transfer camera along scan lines produces less noise and digital artifacts than sampling across the scan lines.

In this study we used images captured at the 100 dpi spatial resolution. 24-bit RGB images were transformed into eight bit intensity images using the standard formula:

$$I = 0.299R + 0.587G + 0.114R \quad (15)$$

20 nonoverlapping 128x128 texture samples were extracted from each intensity image by

centering the 5x4 sampling grid so that equally many pixels were left over on each side of the sampling grid (13 pixels above and below, 53 pixels left and right).

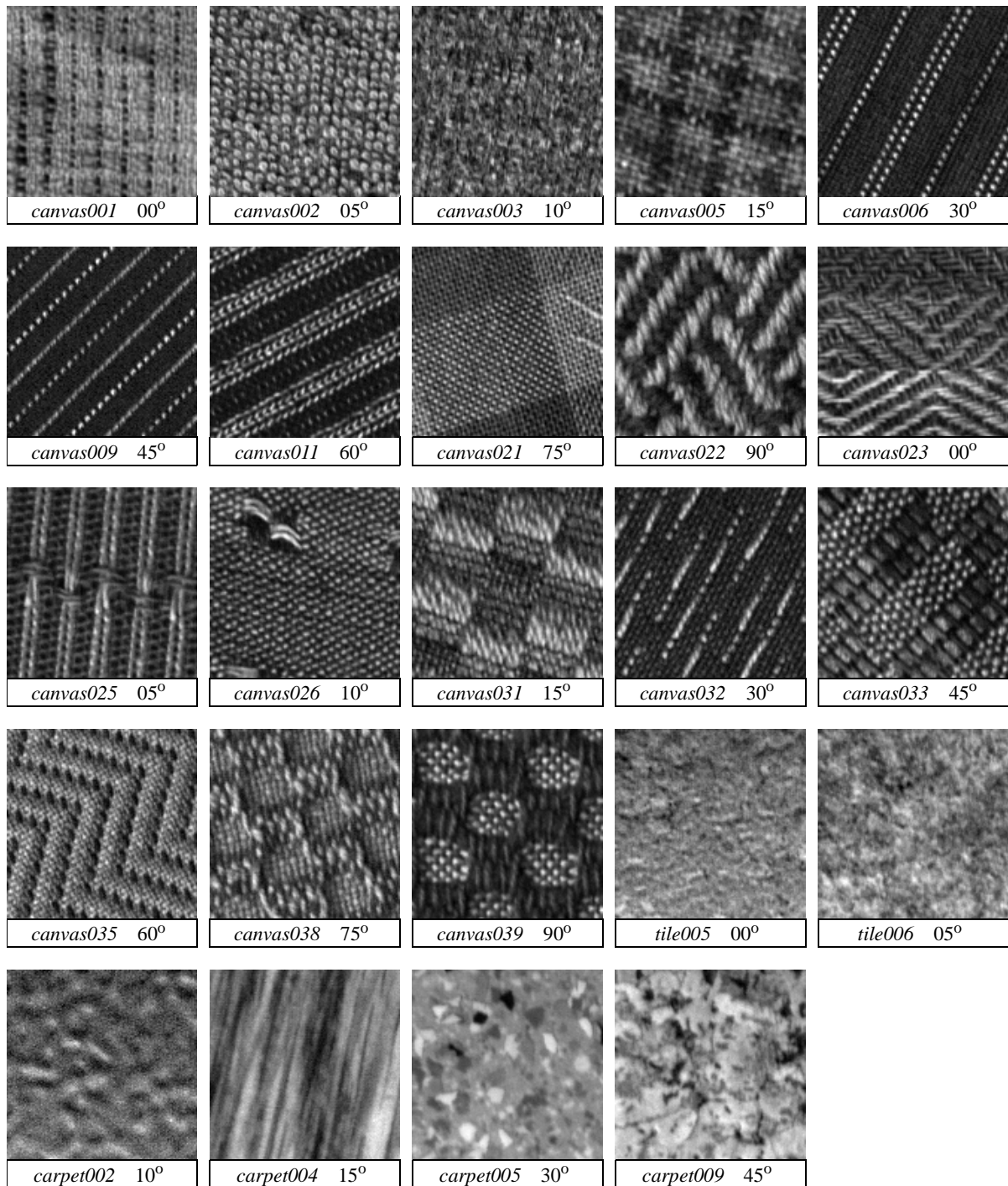


Fig. 5. 128x128 samples of the 24 textures used in Experiment #2 at particular angles.

To remove the effect of global first and second order gray scale properties, which are unrelated to local image texture, each 128x128 texture sample was individually normalized to have an average intensity of 128 and a standard deviation of 20. In every forthcoming experiment the

classifier was trained with the samples extracted from images captured using illuminant ‘inca’ and angle 0° (henceforth termed the reference textures).

We selected the 24 textures shown in Fig. 5. While selecting the textures, the underlying texture pattern was required to be roughly uniform over the whole source image, while local gray scale variations due to varying color properties of the source texture were allowed (e.g. *canvas023* and *canvas033* shown in Fig. 6). Most of the texture samples are canvases with strong directional structure. Some of them have a large tactile dimension (e.g. *canvas025*, *canvas033* and *canvas038*), which can induce considerable local gray scale distortions. Taking variations caused by different spectra of the illuminants into account, we can conclude that this collection of textures presents a realistic and challenging problem for illumination and rotation invariant texture analysis.

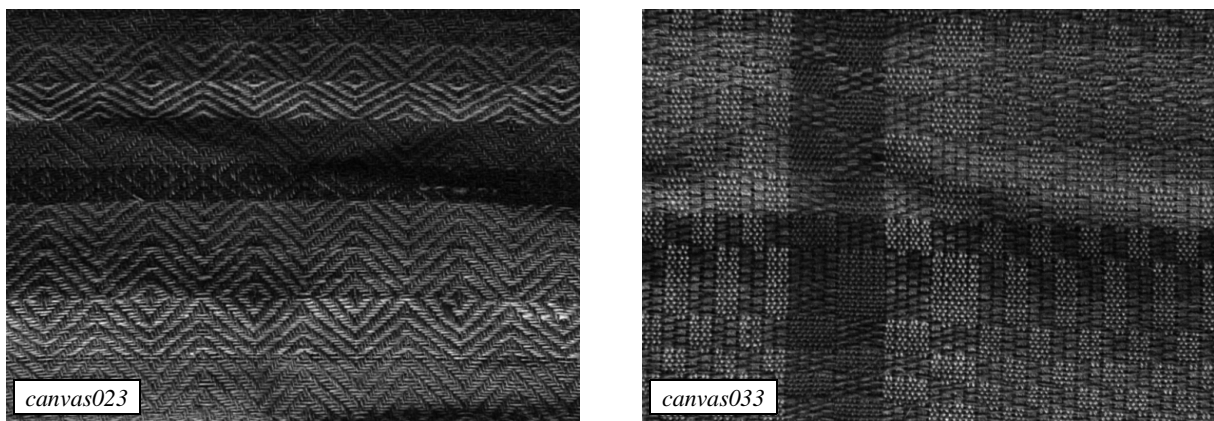


Fig. 6. Intra class gray scale variations caused by varying color content of source textures.

The selection of textures was partly guided by the requirement that the reference textures could be separated from each other. This allowed quantifying our texture operators’ ability to discriminate rotated textures without any bias introduced by the inherent difficulty of the problem. When the 480 samples (24 classes a’ 20) were randomly halved 100 times so that half of the 20 samples in each texture class served as models for training the classifier, and the other 10 samples were used for testing the classifier with the 3-NN method (sample was assigned to the class of the majority of the three most similar models), 99.4% average classification accuracy was achieved with the simple rotation variant $LBP_{8,1}$ operator (Eq.(7)). The performance loss incurred by considering just rotation invariant ‘uniform’ patterns is demonstrated by the

93.2% average accuracy obtained with the corresponding rotation invariant operator $LBP_{8,1}^{riu2}$. $LBP_{16,2}^{riu2}$ and $LBP_{24,3}^{riu2}$ achieved average classification accuracies of 94.6% and 96.3%, respectively, in classifying the reference textures.

3.2.2. Experimental Results

We considered two different setups:

Rotation invariant texture classification (test suite *Outex_TC_00010*): the classifier is trained with the reference textures (20 samples of illuminant ‘inca’ and angle 0° in each texture class), while the 160 samples of the the same illuminant ‘inca’ but the other eight other rotation angles in each texture class are used for testing the classifier. Hence, in this suite there are 480 (24x20) models and 3840 (24x20x8) validation samples in total.

Rotation and illuminant invariant texture classification (test suite *Outex_TC_00012*): the classifier is trained with the reference textures (20 samples of illuminant ‘inca’ and angle 0° in each texture class) and tested with all samples captured using illuminant ‘t184’ (problem 000) and ‘horizon’ (problem 001). Hence, in both problems there are 480 (24x20) models and 4320 (24x20x9) validation samples in total.

In Outex the performance of a texture classification algorithm is characterized with score (S), which corresponds to the percentage of correctly classified samples. Scores for the proposed operators, obtained using the 3-NN method, in rotation invariant texture classification (test suite *Outex_TC_00010*) are shown in Table 4. Of individual operators $LBP_{24,3}^{riu2}$ produced the best score of 94.6%, which recalling the 96.3% score in the classification of reference textures demonstrates the robustness of the operator with respect to rotation. $LBP_{24,3}^{riu2}/VAR_{24,3}$ achieved the best result of joint operators (97.8%), which is a considerable improvement over either of the individual operators, underlining their complementary nature. Multiresolution analysis generally improved the performance, and the highest score (97.9%) was obtained with the combination of $LBP_{8,1}^{riu2}/VAR_{8,1}$ and $LBP_{24,3}^{riu2}/VAR_{24,3}$.

Table 4: Scores (%) for the proposed texture operators in rotation invariant texture classification (test suite *Outex_TC_00010*).

P,R	$LBP_{P,R}^{riu2}$	$VAR_{P,R}$	$LBP_{P,R}^{riu2}/VAR_{P,R}$
8,1	85.1	91.2	95.4
16,2	88.5	90.7	97.2
24,3	94.6	86.2	97.8
8,1 + 16,2	93.1	93.5	97.4
8,1 + 24,3	96.3	95.2	97.9
16,2 + 24,3	95.4	91.9	97.8
8,1 + 16,2 + 24,3	96.1	94.7	97.7

We offer the three employed combinations of (P,R) ((8,1), (16,2), and (24,3)) as a reasonable starting point for realizing the operators, but there is no guarantee that they produce the optimal operator for a given task. For example, when test suite *Outex_TC_00010* was tackled with 189 $LBP_{P,R}^{riu2}$ operators realized using $(P=4, 5, \dots, 24 ; R=1.0, 1.5, \dots, 5.0)$, the best score of 97.2% was obtained with $LBP_{22,4}^{riu2}$. 32 of the 189 operators beat the 94.6% score obtained with $LBP_{24,3}^{riu2}$. 14 of those 32 operators were realized with $(P=11\dots24 ; R=4.0)$ and they produced eight highest scores (97.2 - 97.0%). Task or even texture class driven selection of texture operators could be conducted by optimizing cross validation classification of the training data, for example.

Table 5 shows the numbers of misclassified samples for each texture and rotation angle for $LBP_{24,3}^{riu2}$, $VAR_{24,3}$ and $LBP_{24,3}^{riu2}/VAR_{24,3}$, allowing detailed analysis of the discrimination of individual textures and the effect of rotation. $LBP_{24,3}^{riu2}$ classified seven out of the 24 classes completely correct, having most difficulties with *canvas033* (48/160 misclassified, 19 assigned to *canvas038*, 16 to *canvas031*). $LBP_{24,3}^{riu2}/VAR_{24,3}$ got 16 of the 24 classes correct, and well over half of the 2.2% error was contributed by 50 misclassified *canvas038* samples. In 20 of the 24 classes, the joint operator did at least as well as either of the individual operators, demonstrating the usefulness of complementary analysis. However, the four exceptions (*canvas005*, *canvas023*, *canvas033*, *tile005*) remind that joint analysis is not guaranteed to provide the optimal performance. By studying the column totals and the contributions of individual rotation angles to misclassifications, we see that each operator had most misclassifica-

tions at high rotation angles. For example, angle 90° contributed almost 30% of the misclassified samples in the case of $LBP_{24,3}^{riu2}$. This attributes to the different image acquisition properties of the interline transfer camera in horizontal and vertical directions.

Table 5: The numbers of misclassified samples for each texture and rotation angle for $LBP_{24,3}^{riu2}$ (plain), $VAR_{24,3}$ (*italic*) and $LBP_{24,3}^{riu2}/VAR_{24,3}$ (**bold**) in the base problem. Column total % corresponds to the percentage of the column total of all misclassified samples. Only textures with misclassified samples are included.

Texture	Rotation angle									Total	
	5°	10°	15°	30	45°	60°	75°	90°			
<i>canvas001</i>	. 3 .	. 4 .	. 5 .	. 5 .	. 2 .	. 2 .	. 6 .	. 10 .	. 37 .		
<i>canvas002</i>	1 1 .	1 1 .		
<i>canvas003</i>	. 1 .	. 1 2 .	. 2 .	. 1 .	. 3 .	. 4 .	. 14 .		
<i>canvas005</i>	1 . .	6 1 .	8 . 2	15 1 2		
<i>canvas011</i>	4	2	6 . .		
<i>canvas021</i>	. 4 .	. 3 .	. 2 .	. 3 .	. 4 .	. 1 .	. 1 .	. 2 .	. 20 .		
<i>canvas023</i>	. 11 .	. 18 .	. 16 .	2 18 2	. 18 1	. 17 1	. 14 .	. 17 .	2 129 4		
<i>canvas025</i>	. 1 .	. 1 .	. 2 .	. 2 1 .	3 . .	3 7 .		
<i>canvas031</i>	. 1 .	. 2 .	. 1 .	. 6 .	1 1 .	3 1 .	6 2 .	11 6 .	21 20 .		
<i>canvas032</i> 1 .	1 1 .	6 5 1	8 5 1	6 5 2	21 17 4		
<i>canvas033</i>	3 6 2	3 8 5	2 10 6	2 12 6	9 13 7	9 8 5	10 10 10	10 11 9	48 78 50		
<i>canvas035</i>	. . .	3 . .	3 1 .	2 1 .	2 1 1	2 . .	2 1 .	1 1 .	15 5 1		
<i>canvas038</i>	. 2 .	. 1 .	. 3 .	2 3 .	4 2 .	6 5 .	9 5 .	9 3 .	30 24 .		
<i>canvas039</i>	1 3 .	1 2 .	1 5 .	2 3 .	2 4 .	2 5 .	5 7 .	6 7 .	20 36 .		
<i>tile005</i>	. 5 .	. 3 1	1 2 2	. 6 1	1 6 2	1 5 1	. 1 1	. 9 3	3 37 11		
<i>tile006</i>	. 6 1	. 5 .	1 5 1	1 7 1	2 5 1	2 8 .	3 5 3	5 6 4	14 47 11		
<i>carpet002</i> 1 .	1 2 .	. 1 .	. 3 .	. 2 .	1 9 .		
<i>carpet004</i>	. 3 .	. 3 2 .	1	1 2 .	. 1 .	2 11 .		
<i>carpet005</i> 1 .	2 . .	2 . .	4 1 .		
<i>carpet009</i>	. 4 .	. 5 1	. 2 1	1 8 .	. 2 .	. 3 .	1 5 .	1 7 .	3 36 2		
$LBP_{24,3}^{riu2}$	4 1.9%	7 3.3%	9 4.3%	12 5.7%	28 13.3%	33 15.7%	55 26.2%	62 29.5%	209 94.6%		
$VAR_{24,3}$	50 9.4%	56 10.6%	54 10.2%	80 15.1%	63 11.9%	63 11.9%	72 13.6%	92 17.4%	530 86.2%		
$LBP_{24,3}^{riu2}/VAR_{24,3}$	3 3.5%	7 8.2%	10 11.8%	10 11.8%	12 14.1%	8 9.4%	15 17.7%	20 23.5%	85 97.8%		

Scores in Table 6 illustrate the performance in rotation and illumination invariant texture classification (test suite *Outex_TC_00012*). The classifier was trained with the reference textures (‘inca’, 0°) and tested with samples captured using a different illuminant. The scores for ‘horizon’ and ‘t184’ include samples from all nine rotation angles, i.e. 180 samples of each texture were used for testing the classifier.

We see that classification performance deteriorated clearly, when the classifier was evaluated with samples captured under different illumination than the reference textures used in training. It is difficult to quantify to which extent this is due to the differences in the spectral

properties of the illuminants affecting the colors of textures, and to which extent due to the different imaging geometries of the illuminants affecting the appearance of local distortions caused by the tactile dimension of textures.

Table 6: Scores (%) for the proposed operators in rotation and illumination invariant texture classification (test suite *Outex_TC_00012*). The classifier is trained with reference textures (illuminant ‘inca’) and tested with samples captured using illuminants ‘t184’ (problem 000) and ‘horizon’ (problem 001).

P,R	$LBP_{P,R}^{riu2}$		$VAR_{P,R}$		$LBP_{P,R}^{riu2}/VAR_{P,R}$	
	‘t184’	‘horizon’	‘t184’	‘horizon’	‘t184’	‘horizon’
8,1	67.5	62.7	64.3	64.7	78.8	76.7
16,2	81.2	74.1	67.1	72.5	86.1	84.8
24,3	84.0	80.5	62.6	68.9	86.6	87.2
8,1 + 16,2	83.8	78.3	71.5	72.5	85.0	82.6
8,1 + 24,3	90.2	84.1	75.2	76.7	87.2	86.3
16,2 + 24,3	86.4	82.5	71.6	74.6	87.4	87.0
8,1 + 16,2 + 24,3	88.8	83.4	74.9	76.2	87.3	86.4

In terms of rotation and illumination invariant classification *canvas038* was the most difficult texture for $LBP_{24,3}^{riu2}$ (143/180 ‘t184’ and 178/180 ‘horizon’ samples misclassified) and $LBP_{24,3}^{riu2}/VAR_{24,3}$ (140/180 ‘t184’ and 102/180 ‘horizon’ samples misclassified). This is easy to understand when looking at three different samples of *canvas038* in Fig. 6, which illustrate the prominent tactile dimension of *canvas038* and the effect it has on local texture structure under different illumination conditions.

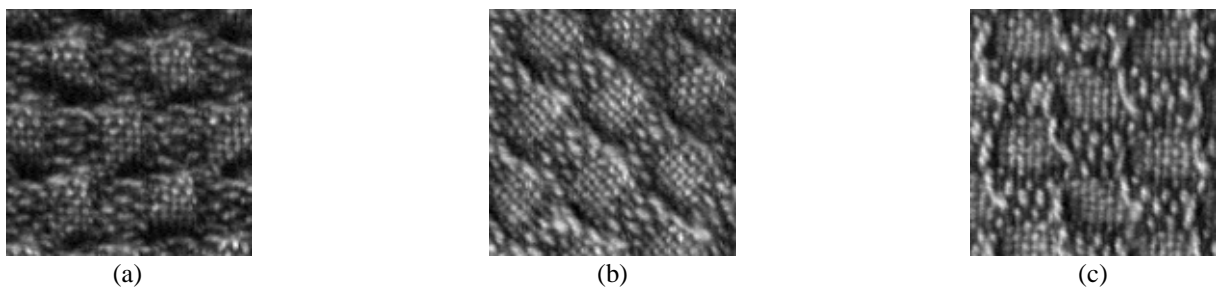


Fig. 7. Three samples of *canvas038*: a) ‘inca’, 0° ; b) ‘horizon’, 45° ; c) ‘t184’, 90° .

For comparison purposes we implemented the wavelet-based rotation invariant features proposed by Porter and Canagarajah, which they concluded to be a favorable approach over Gabor-based and GMRF-based rotation invariant features [32]. We extracted the features using two different image areas, the 16×16 suggested by Porter and Canagarajah and 128×128 . As classifier we used the Mahalanobis distance classifier, just like Porter and Canagarajah.

Table 7 shows the scores for the wavelet-based features extracted with image area 128x128, since they provided slightly better performance than the features extracted with image area 16x16. When these features were employed in classifying the reference textures using 100 random halvings of the samples into training and testing sets, an average classification accuracy of 84.9% was obtained.

In the rotation invariant classification (test suite *Outex_TC_00010*) the wavelet-based based features achieved score of 80.4%, which is clearly lower than the scores obtained with the proposed operators. Wavelet-based features appeared to tolerate illumination changes moderately well, as demonstrated by the scores for the rotation and illumination invariant classification (test suite *Outex_TC_00012*, problems *000* and *001*).

Table 7: Scores (%) for the wavelet-based rotation invariant features proposed by Porter and Canagarajah and the percentages of misclassifications contributed by each rotation angle.

Test suite	Illumination train / test	Score	Rotation angle								
			0°	5°	10°	15°	30°	45°	60°	75°	90°
<i>Outex_TC_00010</i>	'inca' / 'inca'	80.4	-	7.7	6.7	7.9	13.7	22.0	14.3	12.4	15.5
<i>Outex_TC_00012 : 000</i>	'inca' / 'tl84'	71.2	8.8	9.3	9.7	9.9	11.6	16.0	12.3	10.6	11.9
<i>Outex_TC_00012 : 001</i>	'inca' / 'horizon'	72.4	10.1	9.0	9.0	9.8	11.8	15.5	12.1	10.9	11.8

Table 7 also shows the percentages of misclassifications contributed by each rotation angle. We observe that 45° contributed the largest number of misclassified samples in all three cases. This is expected, for the rotation invariance of wavelet-based features is achieved by averaging horizontal and vertical information by grouping together LH and HL channels in each level of decomposition [32], which results in the weakest estimate in the 45° direction.

In rotation invariant classification (test suite *Outex_TC_00010*) wavelet-based features had most difficulties in discriminating textures *canvas035* (86/160 samples misclassified), *canvas023* (78/160), *canvas01* (76/160) and *canvas033* (72/160). In rotation and illumination invariant classification (test suite *Outex_TC_00012*) the highest classification errors were obtained for *canvas11* (158/180 'tl84' and 163/180 'horizon' samples misclassified).

4 Discussion

We presented a theoretically and computationally simple yet efficient multiresolution

approach to gray scale and rotation invariant texture classification based on ‘uniform’ local binary patterns and nonparametric discrimination of sample and prototype distributions. ‘Uniform’ patterns were recognized to be a fundamental property of texture, as they provide a vast majority of local texture patterns in examined textures, corresponding to texture microstructures such as edges. By estimating the distributions of these microstructures, we combined structural and statistical texture analysis.

We developed a generalized gray scale and rotation invariant operator $LBP_{P,R}^{riu2}$, which allows for detecting ‘uniform’ patterns in circular neighborhoods of any quantization of the angular space and at any spatial resolution. We also presented a simple method for combining responses of multiple operators for multiresolution analysis, by assuming that the operator responses are independent.

Excellent experimental results obtained in two problems of true rotation invariance, where the classifier was trained at one particular rotation angle and tested with samples from other rotation angles, demonstrate that good discrimination can be achieved with the occurrence statistics of ‘uniform’ rotation invariant local binary patterns.

The proposed approach is very robust in terms of gray scale variations caused e.g. by changes in illumination intensity, since the $LBP_{P,R}^{riu2}$ operator is by definition invariant against any monotonic transformation of the gray scale. This should make it very attractive in situations where nonuniform illumination conditions are a concern, e.g. in visual inspection. Gray scale invariance is also necessary if the gray scale properties of the training and testing data are different. This was clearly demonstrated in our recent study on supervised texture segmentation with the same image set that was used by Randen and Husoy in their recent extensive comparative study [33]. In our experiments, the basic 3×3 LBP operator provided better performance than any of the methods benchmarked by Randen and Husoy for ten of the twelve texture mosaics, and in most cases by a clear margin [29]. Results in Experiment #2, involving three illuminants with different spectra and large intra class color variations in source textures, demonstrate that the proposed approach is also robust in terms of color variations.

Computational simplicity is another advantage, as the operators can be realized with a few comparisons in a small neighborhood and a lookup table. This facilitates a very straightfor-

ward and efficient implementation, which may be mandatory in time critical applications.

If gray scale invariance is not required, performance can be further improved by combining the $LBP_{P,R}^{riu2}$ operator with the rotation invariant variance measure $VAR_{P,R}$ that characterizes the contrast of local image texture. As we observed in the experiments, the joint distributions of these orthogonal operators are very powerful tools for rotation invariant texture analysis.

The spatial size of the operators is of interest. Some may find our experimental results surprisingly good, considering how small spatial support our operators have for example in comparison to much larger Gabor filters that are often used in texture analysis. However, the built-in spatial support of our operators is inherently larger, as only a limited subset of patterns can reside adjacent to a particular pattern. Still, our operators may not be suitable for discriminating textures where the dominant features appear at a very large scale. This can be addressed by increasing the spatial predicate R , which allows generalizing the operators to any neighborhood size.

The performance can be further enhanced by multiresolution analysis. We presented a straightforward method for combining operators of different spatial resolutions for this purpose. Experimental results involving three different spatial resolutions showed that multiresolution analysis is beneficial, except in those cases where a single resolution was already sufficient for a very good discrimination. Ultimately, we would want to incorporate scale invariance, in addition to gray scale and rotation invariance.

Regarding future work, one thing deserving a closer look is the use of a task specific subset of rotation invariant patterns, which may in some cases provide better performance than ‘uniform’ patterns. Patterns or pattern combinations are evaluated with some criterion, e.g. classification accuracy on a training data, and the combination providing the best accuracy is chosen. Since combinatorial explosion may prevent from an exhaustive search through all possible subsets, suboptimal solutions such as stepwise or beam search should be considered. We have explored this approach in a classification problem involving 16 textures from the Curet database [10] with a 11.25° degree tilt between training and testing images [25]. Thanks to its invariance against monotonic gray scale transformations, the methodology is applicable to textures with minor 3D transformations, corresponding to such textures which a human can easily,

without attention, classify to the same categories as the original textures. Successful discrimination of Curret textures captured from slightly different viewpoints demonstrates the robustness of the approach with respect to small distortions caused by height variations, local shadowing, etc.

In a similar fashion to deriving a task specific subset of patterns, instead of using a general purpose set of operators, the parameters P and R could be ‘tuned’ for the task in hand, or even for each texture class separately. We also reported that when classification errors occur, the model of the true class very often ranks second. This suggests that classification could be carried out in stages, by selecting operators which best discriminate among remaining alternatives.

Our findings suggest that complementary information of local spatial patterns and contrast plays an important role in texture discrimination. There are studies on human perception that support this conclusion. For example, Tamura *et al.* [35] designated coarseness, edge orientation and contrast as perceptually important textural properties. The *LBP* histograms provide information of texture orientation and coarseness, while the local gray scale variance characterizes contrast. Similarly, Beck *et al.* [3] suggested that texture segmentation of human perception might occur as a result of differences in the first-order statistics of textural elements and their parts, i.e. in the *LBP* histogram.

Acknowledgments

The authors wish to thank Dr. Nishan Canagarajah and Mr. Paul Hill from the University of Bristol for providing the texture images of Experiment #1. The authors also thank anonymous referees for helpful comments. The financial support provided by the Academy of Finland is gratefully acknowledged.

Note

Images used in Experiment #1, together with other imagery used in our published work, and Matlab implementation of the experiment can be downloaded from <http://www.ee.oulu.fi/research/imag/texture>. Test suites used in Experiment #2 are available at the Outex web site

References

- [1] Alata O, Cariou C, Ramananjara C and Najim M (1998) Classification of rotated and scaled textures using HMHV spectrum estimation and the Fourier-Mellin Transform. Proc. IEEE International Conference on Image Processing, Chicago, IL, 1:53-56.
- [2] Arof H and Deravi F (1998) Circular neighbourhood and 1-D DFT features for texture classification and segmentation. IEE Proceedings - Vision, Image and Signal Processing 145:167-172.
- [3] Beck J, Prazdny S and Rosenfeld A (1983) A theory of textural segmentation. In Beck J, Hope B and Rosenfeld A (eds.) Human and Machine Vision, Academic, New York.
- [4] Brodatz P (1966) Textures: a photographic album for artists and designers. Dover, New York.
- [5] Chang S, Davis LS, Dunn SM, Eklundh JO and Rosenfeld A (1987) Texture discrimination by projective invariants. Pattern Recognition Letters 5:337-342.
- [6] Chen J-L and Kundu A (1994) Rotation and gray scale transform invariant texture identification using wavelet decomposition and hidden Markov model. IEEE Transactions on Pattern Analysis and Machine Intelligence 16:208-214.
- [7] Chetverikov D (1982) Experiments in the rotation-invariant texture discrimination using anisotropy features. Proc. 6th International Conference on Pattern Recognition, Munich, Germany, 2:1071-1073.
- [8] Chetverikov D (2000) Pattern regularity as a visual key. Image and Vision Computing 18:975-985.
- [9] Cohen FS, Fan Z and Patel MA (1991) Classification of rotated and scaled texture images using Gaussian Markov Random Field models. IEEE Transactions on Pattern Analysis and Machine Intelligence 13:192-202.
- [10] Dana K, Nayar S, van Ginneken B and Koenderink J (1997) Reflectance and texture of real-world surfaces. Proc. International Conference on Computer Vision and Pattern Recognition, San Juan, Puerto Rico, 151-157. <http://www.cs.columbia.edu/CAVE/curet/>.
- [11] Davis LS (1981) Polarograms: a new tool for image texture analysis. Pattern Recognition 13:219-223.
- [12] Davis LS, Johns SA and Aggarwal JK (1979) Texture analysis using generalized cooccurrence matrices. IEEE Transaction on Pattern Analysis and Machine Intelligence 1:251-

- [13] Duda RO and Hart PE (1973) *Pattern Classification and Scene Analysis*. John Wiley & Sons, New York.
- [14] Fountain SR and Tan TN (1998) Efficient rotation invariant texture features for content-based image retrieval. *Pattern Recognition* 31:1725-1732.
- [15] Greenspan H, Belongie S, Goodman R and Perona P (1994) Rotation invariant texture recognition using a steerable pyramid. *Proc. 12th International Conference on Pattern Recognition*, Jerusalem, Israel, 2:162-167.
- [16] Haley GM and Manjunath BS (1999) Rotation-invariant texture classification using a complete space-frequency model. *IEEE Transactions on Image Processing* 8:255-269.
- [17] Kashyap RL and Khotanzad A (1986) A model-based method for rotation invariant texture classification. *IEEE Transactions on Pattern Analysis and Machine Intelligence* 8:472-481.
- [18] Kondepudy R and Healey G (1994) Using moment invariants to analyze 3-D color textures. *Proc. IEEE International Conference on Image Processing*, Austin, TX, 2:61-65.
- [19] Kullback S (1968) *Information Theory and Statistics*. Dover, New York.
- [20] Lam W-K and Li C-K (1997) Rotated texture classification by improved iterative morphological decomposition. *IEE Proceedings - Vision, Image and Signal Processing* 144:171-179.
- [21] Leung MM and Peterson AM (1992) Scale and rotation invariant texture classification. *Proc. 26th Asilomar Conference on Signals, Systems and Computers*. Pacific Grove, CA, 1:461-465.
- [22] Madiraju SVR and Liu CC (1994) Rotation invariant texture classification using covariance. *Proc. International Conference on Image Processing*, Washington, D.C., 2:655-659.
- [23] Manian V and Vasquez R (1998) Scaled and rotated texture classification using a class of basis functions. *Pattern Recognition* 31:1937-1948.
- [24] Mao J and Jain AK (1992) Texture classification and segmentation using multiresolution simultaneous autoregressive models. *Pattern Recognition* 25:173-188.
- [25] Mäenpää T, Ojala T, Pietikäinen M and Soriano M (2000) Robust texture classification by subsets of Local Binary Patterns. *Proc. 15th International Conference on Pattern Recognition*, Barcelona, Spain, 3:947-950.
- [26] Mäenpää T, Pietikäinen M and Ojala T (2000) Texture classification by multi-predicate Local Binary Pattern operators. *Proc. 15th International Conference on Pattern Recognition*

- tion, Barcelona, Spain, 3:951-954.
- [27] Ojala T, Mäenpää T, Pietikäinen M, Kyllönen J, Viertola J and Huovinen S (2001) Outex - A new framework for empirical evaluation of texture analysis algorithms, submitted.
- [28] Ojala T, Pietikäinen M and Harwood D (1996) A comparative study of texture measures with classification based on feature distributions. *Pattern Recognition* 29:51-59.
- [29] Ojala T, Valkealahti K, Oja E and Pietikäinen M (2001) Texture discrimination with multi-dimensional distributions of signed gray level differences. *Pattern Recognition* 34:727-739.
- [30] Pietikäinen M, Ojala T and Xu Z (2000) Rotation-invariant texture classification using feature distributions. *Pattern Recognition* 33:43-52.
- [31] Porat M and Zeevi Y (1989) Localized texture processing in vision: analysis and synthesis in the Gaborian space. *IEEE Transactions on Biomedical Engineering* 36:115-129.
- [32] Porter R and Canagarajah N (1997) Robust rotation-invariant texture classification: wavelet, Gabor filter and GMRF based schemes. *IEE Proceedings - Vision, Image and Signal Processing* 144:180-188.
- [33] Randen T and Husoy JH (1999) Filtering for texture classification: a comparative study. *IEEE Transactions on Pattern Analysis and Machine Intelligence* 21:291-310.
- [34] Sokal RR & Rohlf FJ (1969) *Biometry*. W.H. Freeman, New York.
- [35] Tamura H, Mori S and Yamawaki T (1978) Textural features corresponding to visual perception. *IEEE Transactions on Systems, Man, and Cybernetics* 8:460-473.
- [36] Tan TN (1994) Scale and rotation invariant texture classification. *IEE Colloquium on Texture Classification: Theory and Applications* 3/1-3/3.
- [37] Wang L and Healey G (1998) Using Zernike moments for the illumination and geometry invariant classification of multispectral texture. *IEEE Transactions on Image Processing* 7:196-203.
- [38] Wu W-R and Wei S-C (1996) Rotation and gray-scale transform-invariant texture classification using spiral resampling, subband decomposition and Hidden Markov Model. *IEEE Transactions on Image Processing* 5:1423-1434.
- [39] Wu Y and Yoshida Y (1995) An efficient method for rotation and scaling invariant texture classification. *Proc. IEEE International Conference on Acoustics, Speech, and Signal Processing*, Detroit, MI, 4:2519-2522.
- [40] You J and Cohen HA (1993) Classification and segmentation of rotated and scaled textured images using texture 'tuned' masks. *Pattern Recognition* 26:245-258.