

A Supplementary Figures

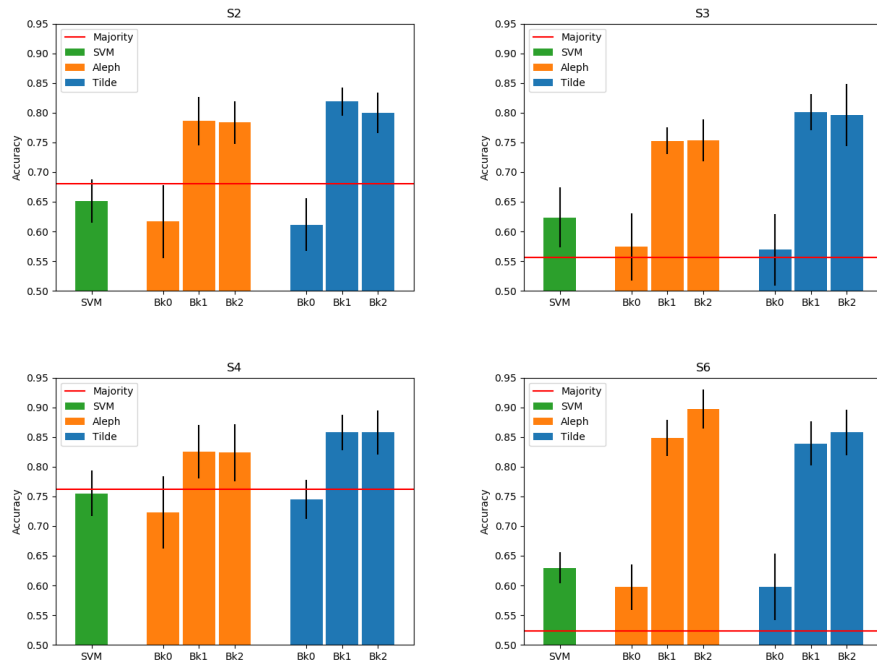


Fig. 7. Accuracy (mean and standard deviation) for all classifiers learned from S_2 , S_3 , S_4 and S_6

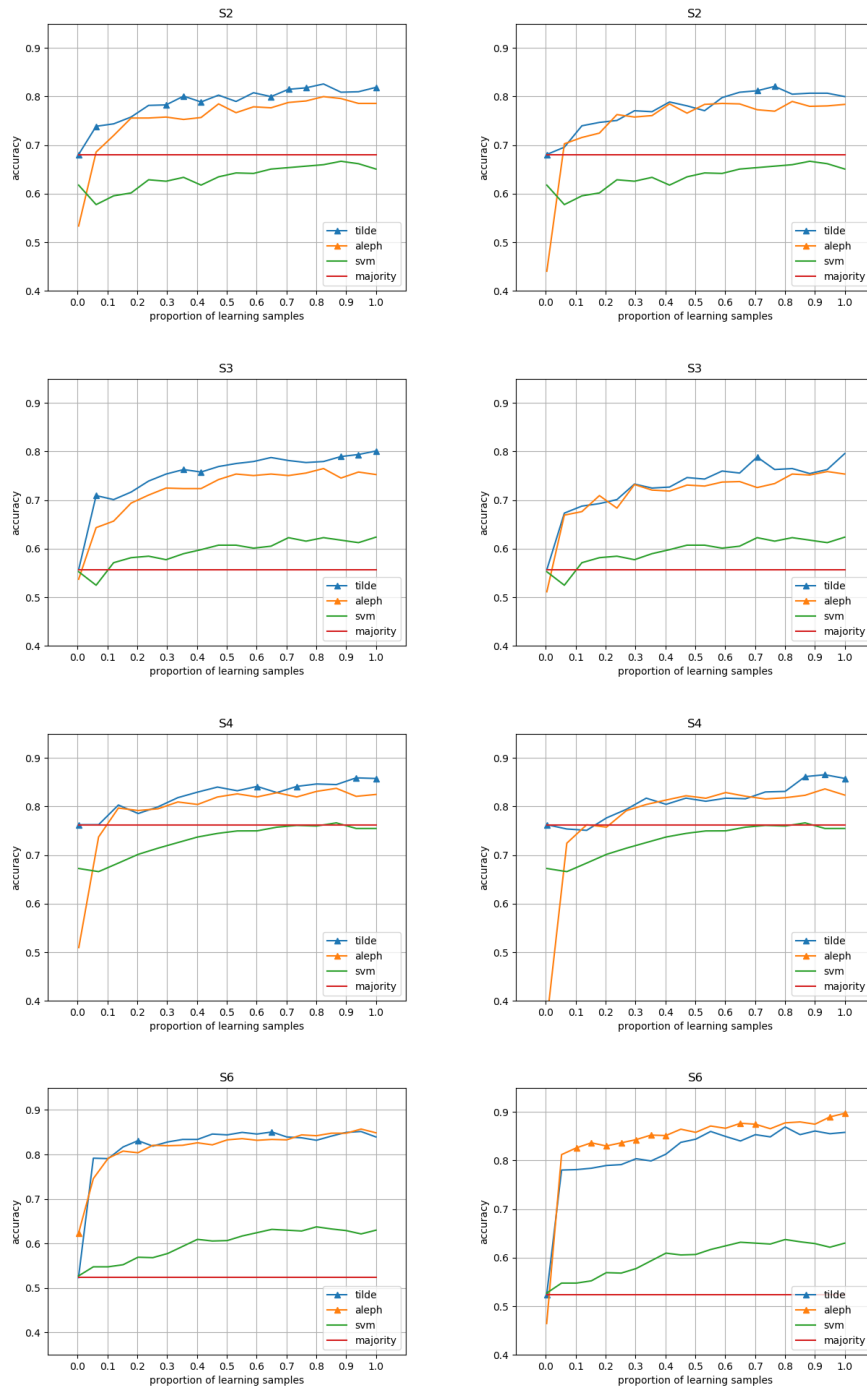


Fig. 8. Accuracy curves for BK_1 (left) and BK_2 (right) on datasets learned from S_2, S_3, S_4 and S_6

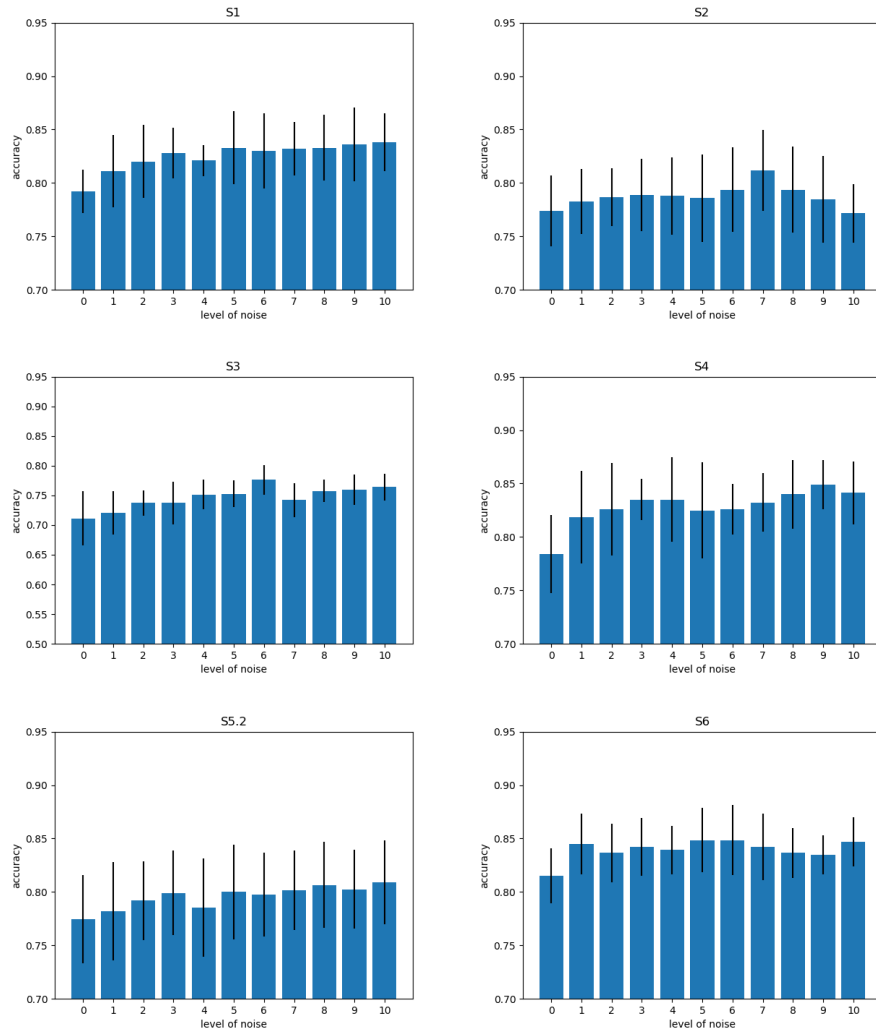


Fig. 9. Accuracy with Aleph and BK_1 function of noise parameter

Expert	E_1	E_2	E_3	E_4
Labelled set	S_1	S_2	S_4	$S_{5,2}$
BK_1 Tilde	16.0	36.8	35.4	39.0
BK_2 Tilde	36.2	61.6	41.1	70.9
BK_1 Aleph	21.7	22.6	21.4	23.0
BK_2 Aleph	25.2	28.3	24.7	26.2

Table 2. Learned model complexity (node average for Tilde and rule average for Aleph)

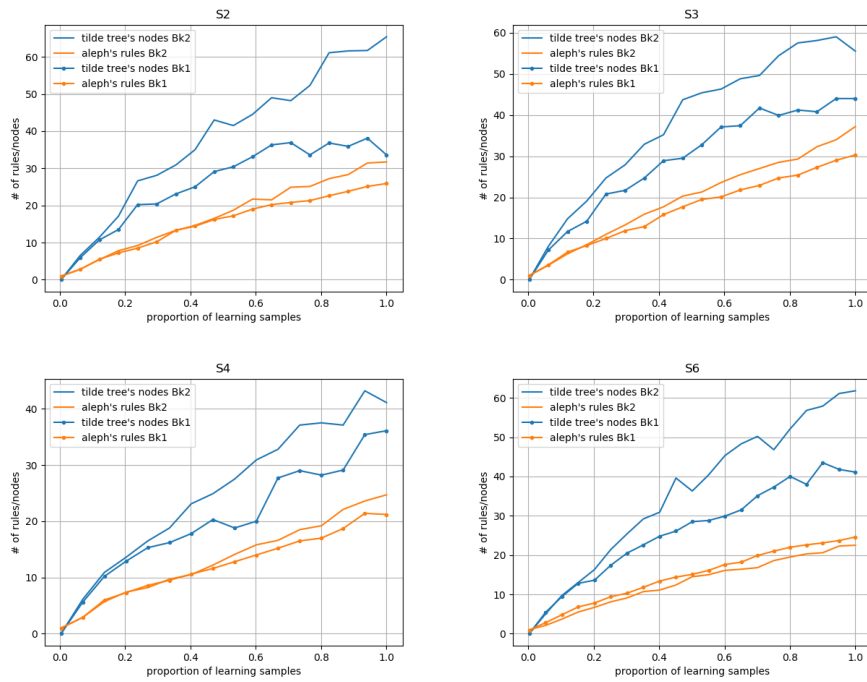


Fig. 10. Model complexity (number of nodes and rules) given different background knowledges and datasets